

Space Designers
Space Overseas Trading Company

- 📍 26, 201/301, "Space Designers",
Gaurav Residency, Lashkaribagh,
Bhoslewadi, Nagpur - 440 017
- ☎️ +91 712 2641011
- 📞 +919422860641, +91 9370199511
- ✉️ spaceoverseastradingcompany@gmail.com
spacedesignerspvtltd@gmail.com

Associate Patners:-
D.T.H Prefab & Interior

- 📍 21, Emperor Square, TDI City,
Kundli Sonipat, Haryana-131028
- 📞 +91-9810086302, 9910477066
- 🌐 www.dthtensileprefab.in
dthprefab@yahoo.com

PREFAB LIGHT STEEL VILLA

| Turnkey Project | Hotel Room Furnitures | Pre Fabricated Steel Villa
| Russian Pine Wood Villa | All Interior Products

COMPANY INTRODUCTION

Space Designer is a specialist in the design, manufacture and installation of state of art-the modern and stylish medium and high grade furniture , accessories and full on projects. Space Designer is famous for producing outstanding and glamorous interior and customized interior , civil and steel concept solution that perfectly match client's vision for a world class hospitality property.

STEEL PERFAB LIGHT HOUSE

We design environmental economical removable house, including normal, standard and high three levels. According to consumer's requirement, combine with standardized modules to present concise and nice appearance , security construction, safe application and standardized operation temporary construction idea. It's industrialization production, storage capability and recycles in use housing product.





SPACE DESIGNER

Space Designer is a professional steel structure products provider. With superior building quality and commitment to customer service, Space Designer has earned trusts of clients and respects of competitors in steel building industry.



PRODUCT

Our products are designed and manufactured according to engineering standards to withstand the toughest environmental challenges. Quality standard building packages or custom designed structure will continue to exceed your expectation year after year.



SERVICE

Services to you is our No.1 priority. We believe earning your trusts and respects is as important as finished products. From the selection of right structure for you specific project to building completion, we are committed to working with you every step of the way.

OUR TECHNOLOGY:-

With Space Designer's housing system, you will be able to enjoy the following benefits:

- Less energy consumption due to good heat-insulating property;
- Short construction period, less labor and less construction cost;
- Lower foundation cost due to light self-weight of the building;
- Recyclable materials, less construction noise, and environment-friendly;
- No worry about termite, moth or mildew;
- Higher safety thanks to customized structural design according to your local weather conditions and building codes;



WORKSHOP IN CHINA



WORKSHOP IN CHINA

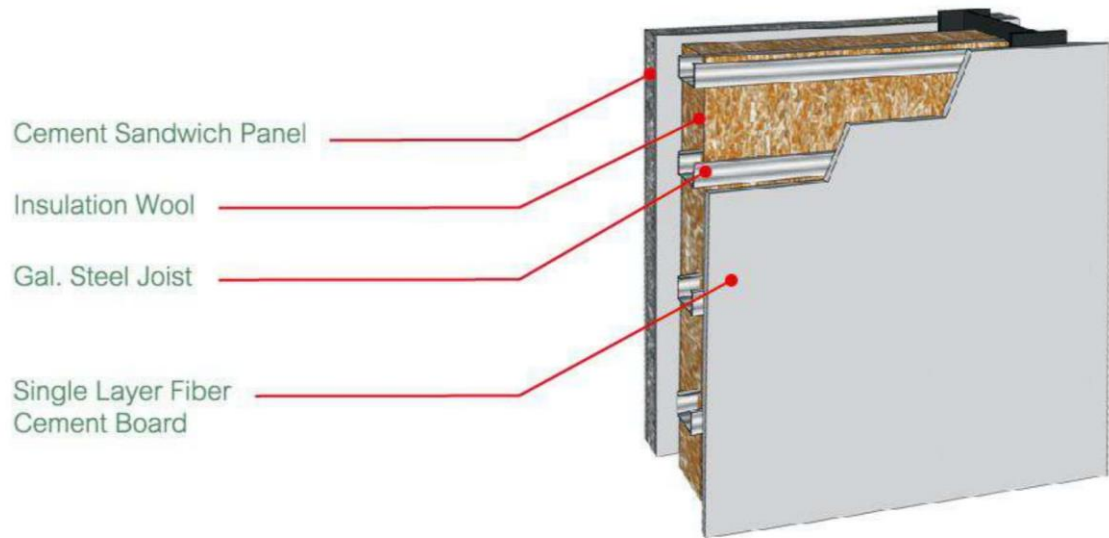


EASY HOUSE :-

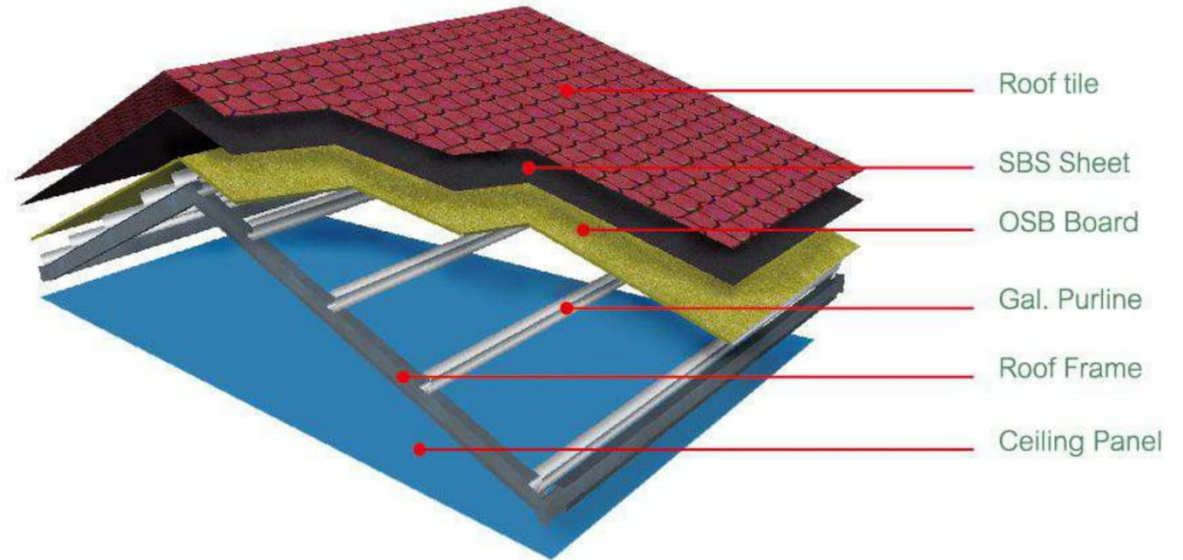


Easy House System

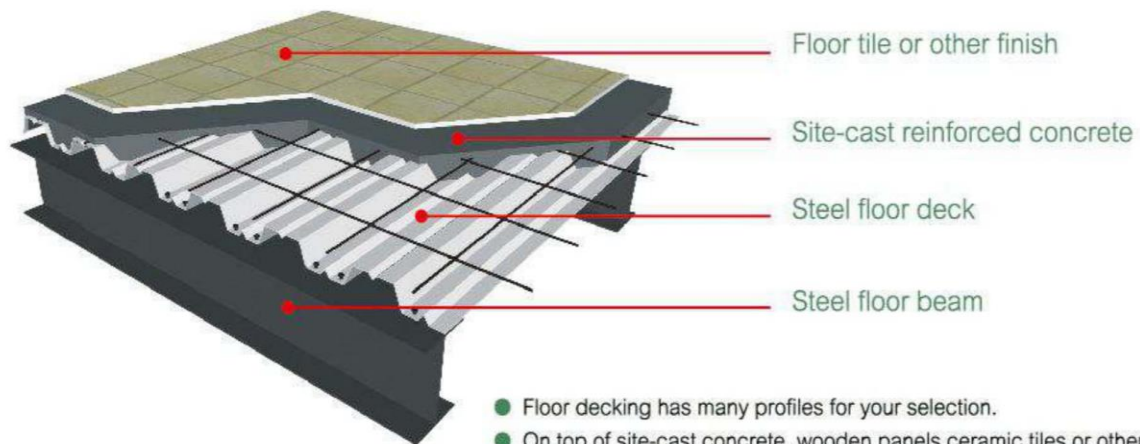
- Main Components: Light steel structure + roofing sheet + cement sandwich wall system;
- Features: Economical, fast –assembly, durable, water proof & wind resistant, etc..
- Applications: Social housing, condominium, labor camps, etc..



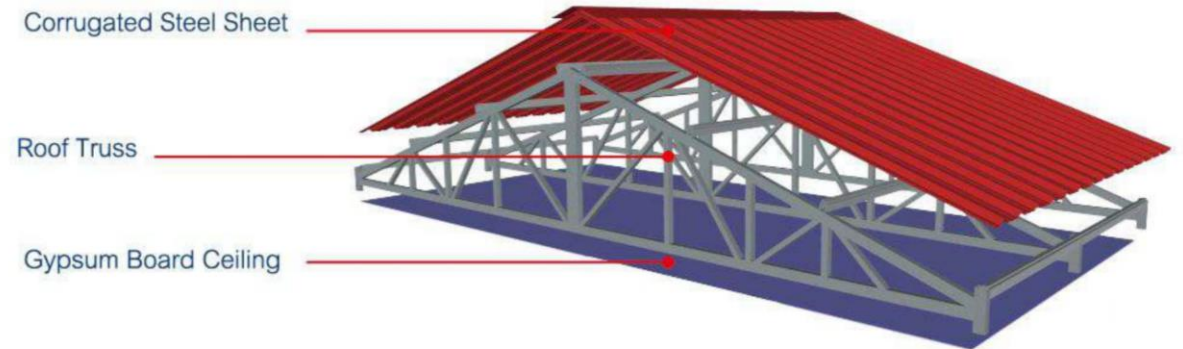
- With double layer cement panel adopted, this wall system features outstanding sound & thermal insulation property.



- Roof tile has many options such as metallic sheet ,asphalt sheet,glazed tile,etc..
- Suspended ceiling can be gypsum board or fiber cement board for options.

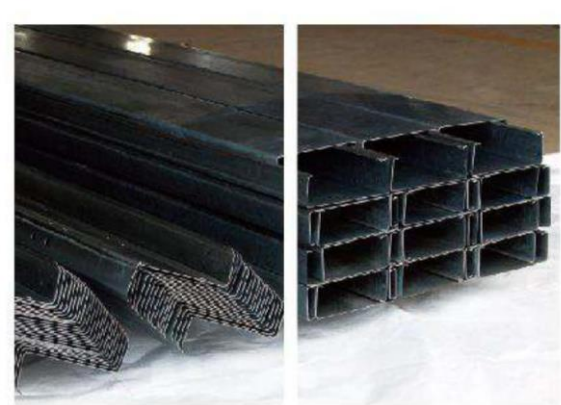
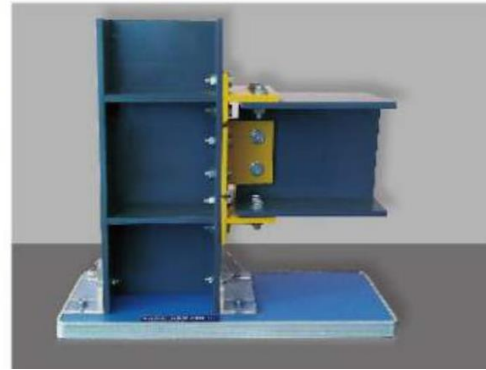


- Floor decking has many profiles for your selection.
- On top of site-cast concrete ,wooden panels,ceramic tiles or other floor finish can be used.



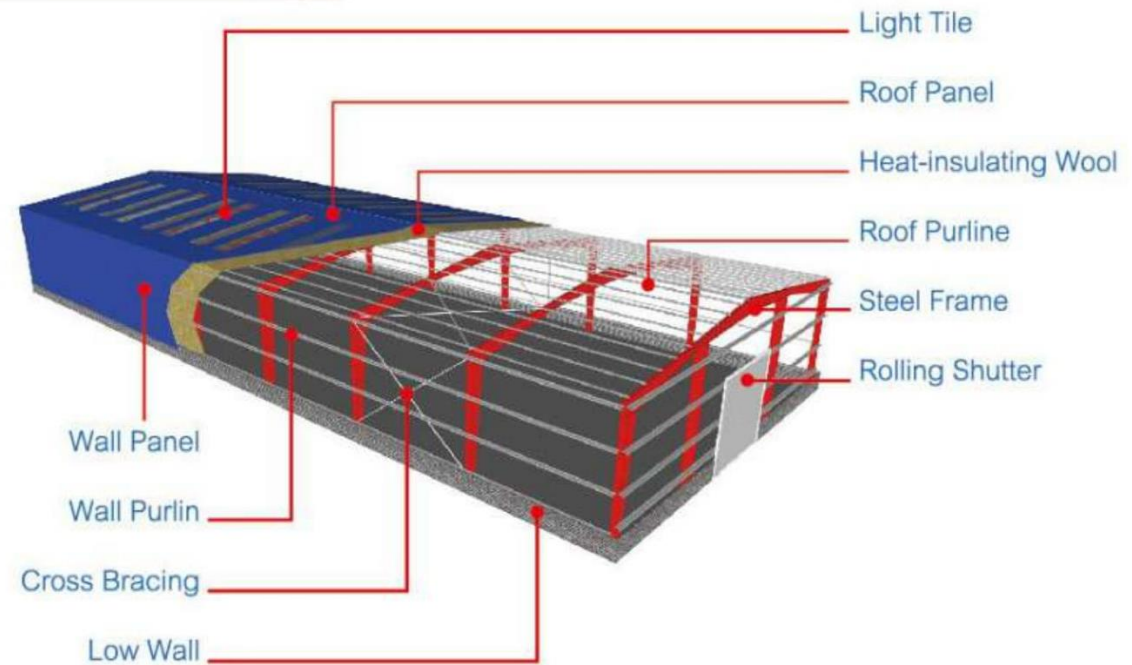
- Roof truss will be prefabricated in our plant entirely,which means faster assembly on site.
- Roof board can be profile sheeting+insulation or EPS sandwich for your selection.
- Suspended ceiling can be gypsum board or modular board for your selection.

JOINERY DETAILS :-



z-purlin

c-purlin



•PORTAL STEEL STRUCTURE:

Portal steel structure has the characteristics of light weight, high plasticity and good toughness. It fits in construct warehouses, workshops and garages .



•STEEL SPACE FRAME:

Steel space frame is constitute with steel rods and joint balls. It's suit to big span buildings, like airports, storages, stadiums. Arched space frame can span150m.

Space frame has standard rods and balls, so makes it easier to transport and erection.



•CURTAIN WALL:

Curtain wall can cover the building original wall, make the building Looks wonderful.

We supply glazing curtain wall and metal curtain walls, including glass,aluminium panel, aluminium-plastic panel, Al-Mg-Mn panel.



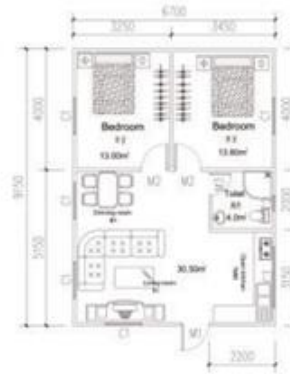
SPRING VILLA-CONCRETE VILLA:-



INTRODUCTION:

- 1、 Steel structure for main frame.
- 2、 100mm Concrete panel for external and internal wall.
- 3、 Sandwich panel for roof + Villa tile or asphalt fiber glass shingle.
- 4、 Aluminium alloy sliding window and steel door.
- 5、 Ceramic wall tile decoration outside , painting inside.

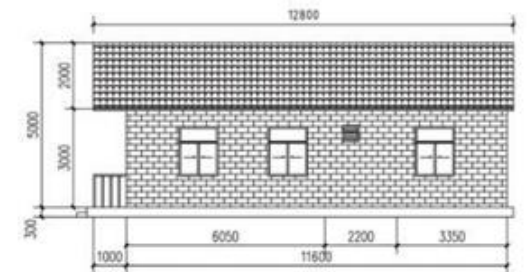
Australia villa 68m² , -2 bedrooms



Australia villa 97.36m² , -3 bedrooms



Australia villa 115.29m² , -3 bedrooms



ENGINEERING EXAMPLE:-

Earthquake disaster housing project.

Suit for Disaster relief house and Temporary relocation settling house.



CONTAINER HOUSE:-

20'GP: 6.058MX2, 438MX2.85H

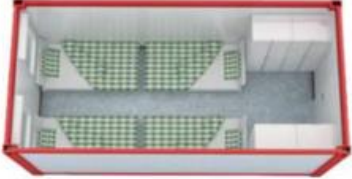


Container house inside picture

luxury container

Qatar double floor container

South sudan container house for soldier camp



TYPE A



TYPE B



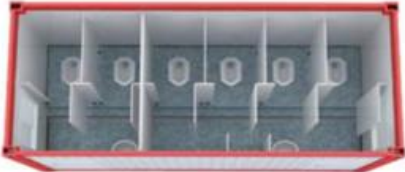
TYPE C



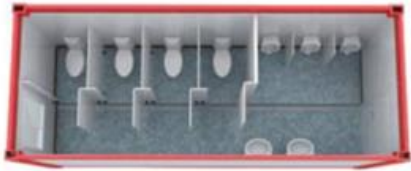
TYPE D



TYPE E



TYPE F



TYPE G



TYPE H

ENGINEERING EXAMPLE:-

VILLA RESORT PROJECT



LOW COST HOUSING/ AFFORDABLE HOUSING

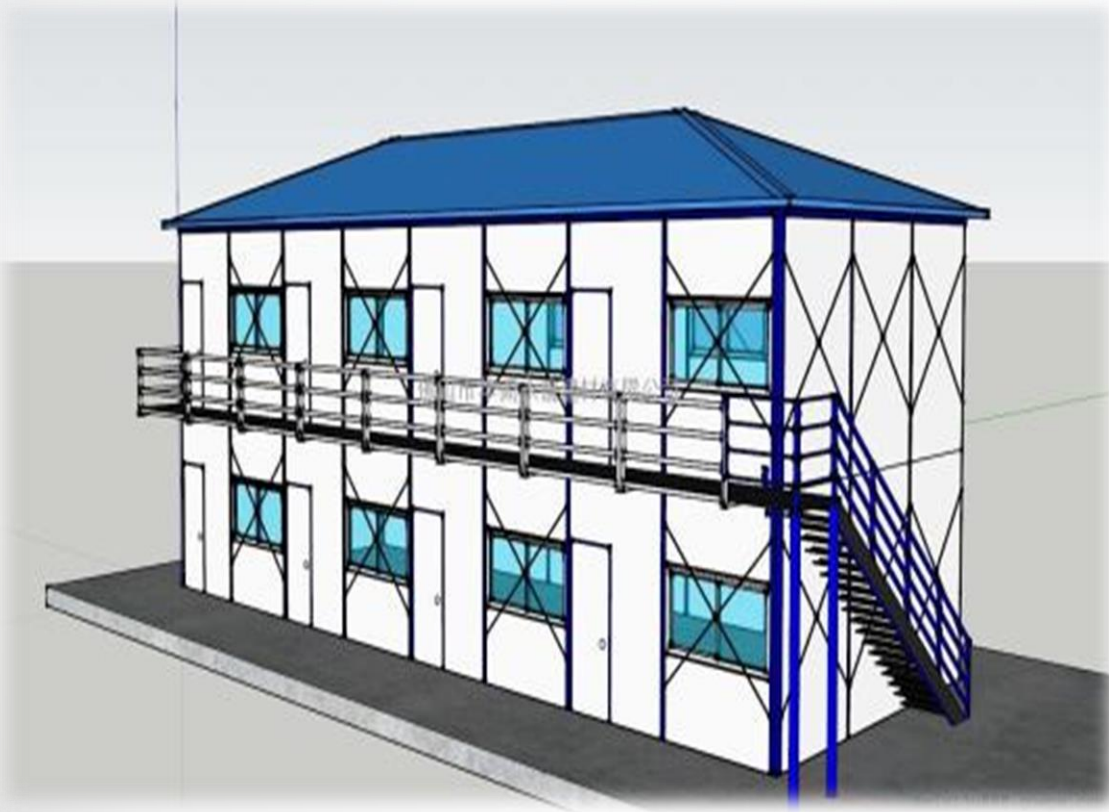
Low Cost housing or Affordable housing refers to housing units that are affordable by that section of society whose income is below the median household income.

Though different countries have different definitions for affordable housing, but it is largely the same, i.e. affordable housing should address the housing needs of the lower or middle income households. Affordable housing becomes a key issue especially in developing nations where a majority of the population isn't able to buy houses at the market price.

Disposable income of the people remains the primary factor in determining the affordability. As a result, it becomes the increased responsibility of the government to cater to the rising demand for affordable housing. The Government of India has taken various measures to meet the increased demand for affordable housing along with some developers and stressing on public-private partnerships (PPP) for development of these units



AFTER STUDYING, WE DECIDED TO ADOPT THE ACTIVITY STAFF QUARTER ROOM OF LIGHT STEEL STRUCTURE

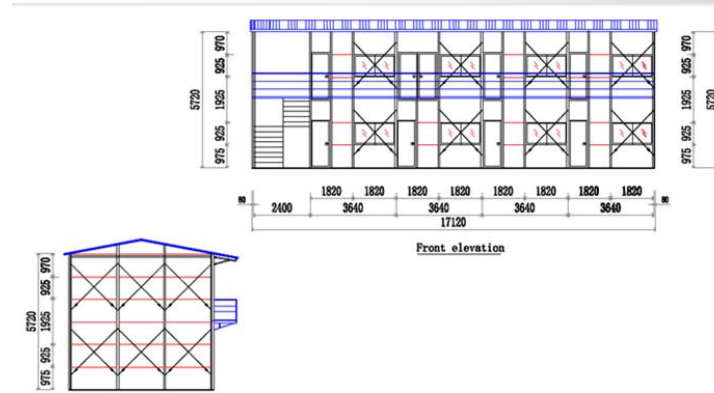
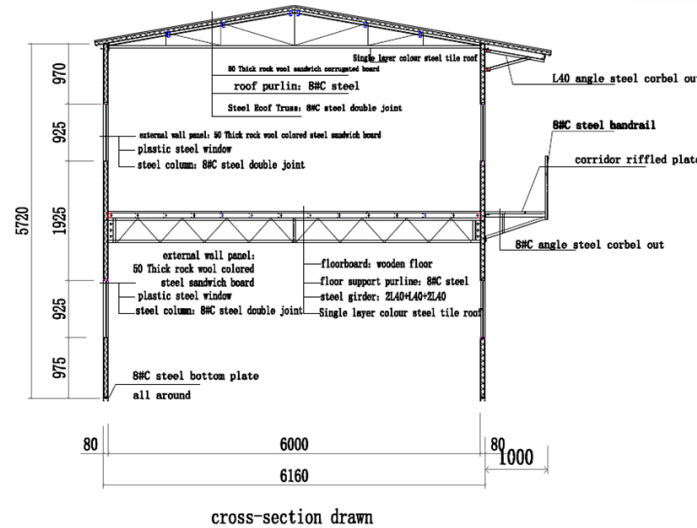


The activity staff quarters is steel structure.

Its characteristic is: can disassemble, convenient transportation, mobile convenient, the activity room is located in the hillside, the hill, the grassland, the desert, the river.

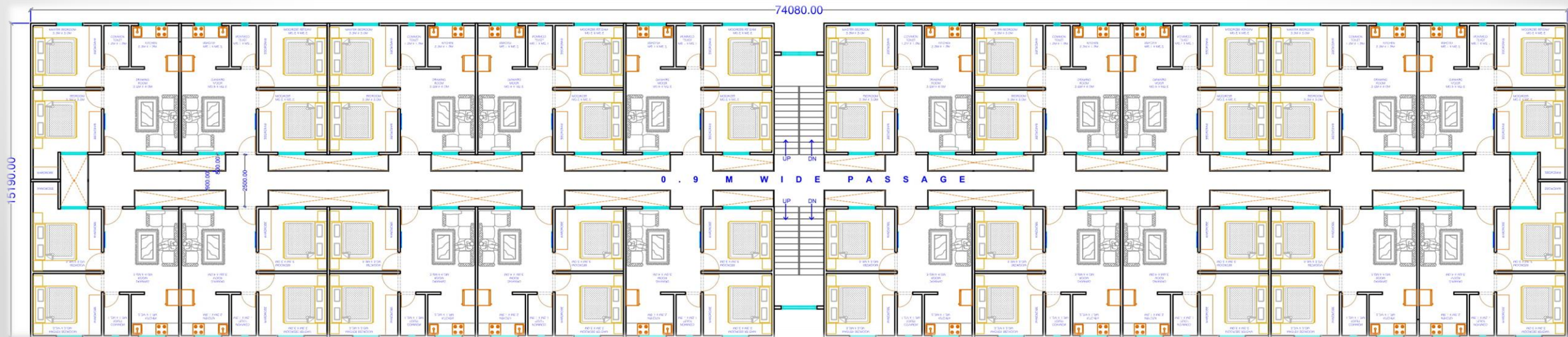
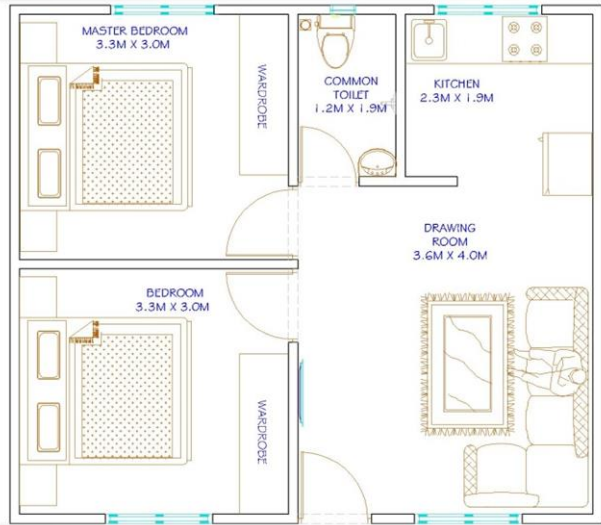
Do not take up space, can be built into 15-160 square meters, mobile health clean, indoor facilities are complete, the durability of the stability of the trailer is strong, beautiful and easy, is family tourism, resorts, villas, places of entertainment's first choice.

Designed according to customer's requirements, exquisite and elegant, good thermal insulation performance, warm summer and cool summer, the activity room is mostly finished in the factory.

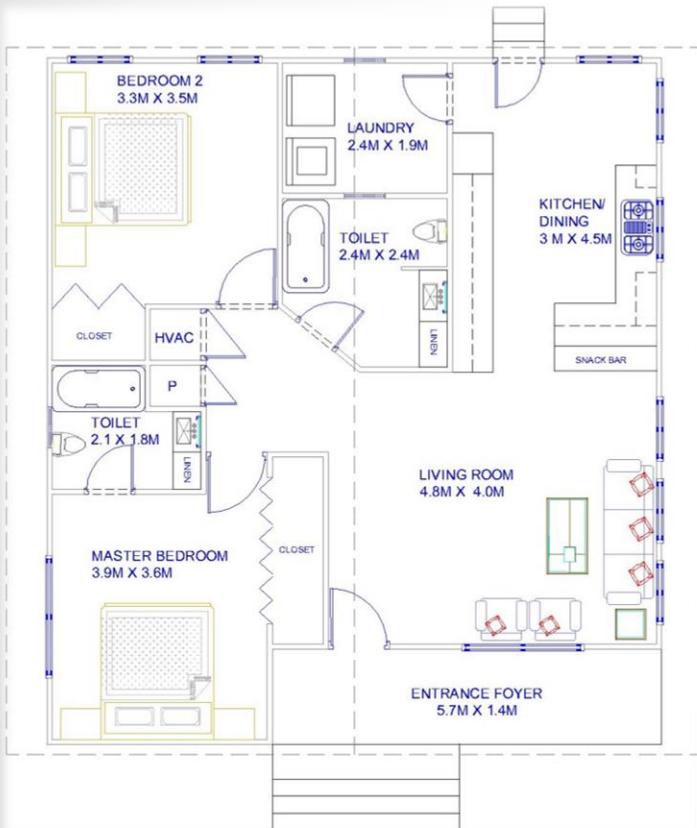


ARCHITECTURAL DRAWING & PROJECTS

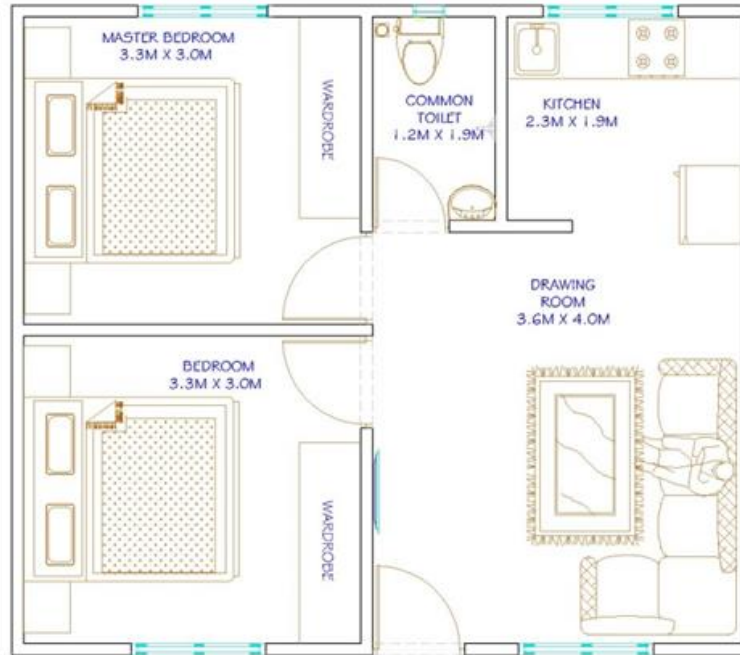
PROJECT FOR JAGDALPUR BASTAR



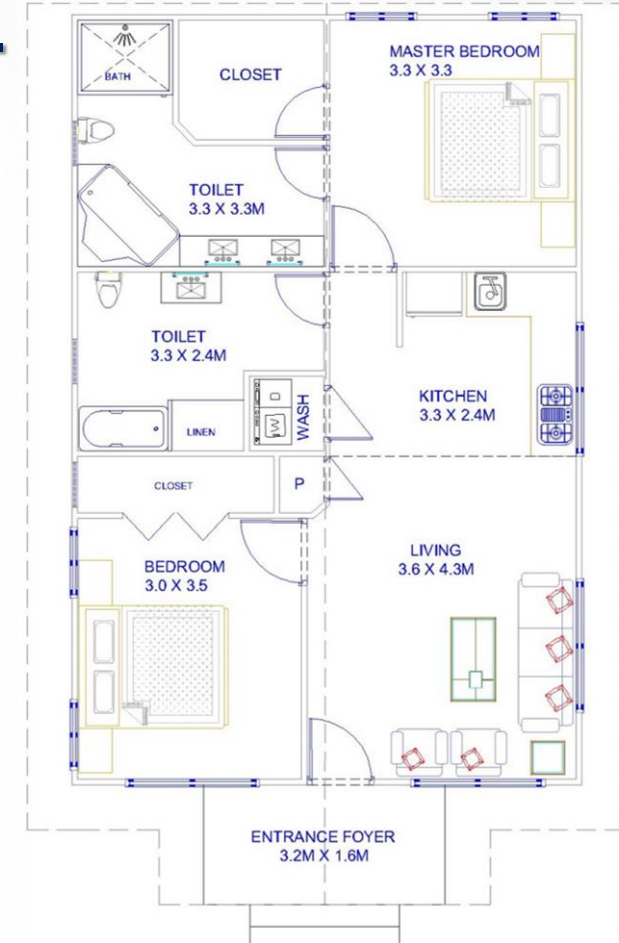
AFFORDABLE STEEL HOUSES BETWEEN 40 TO 110 SQ.M:-



BUILT UP AREA=106.00 SQ.M = 1145 SQ.FT



BUILT UP AREA=42.00 SQ.M = 453 SQ.FT



BUILT UP AREA=93.00 SQ.M = 1001 SQ.FT



STEP.I Inquiry & Offer

STEP.II Design

STEP.III Placing Order

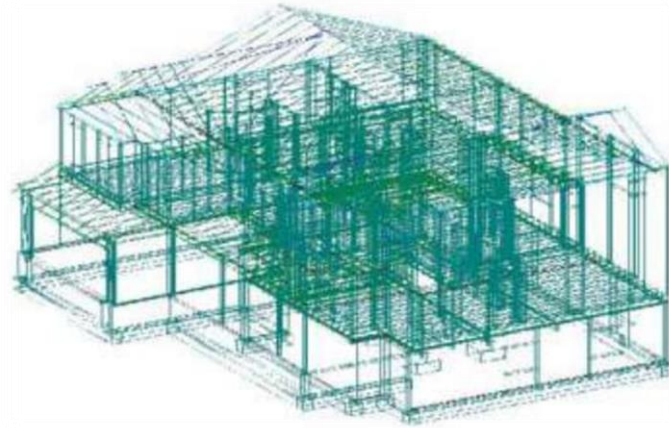
STEP.IV Estimate

STEP.V Production

STEP.VI Packing & Delivery

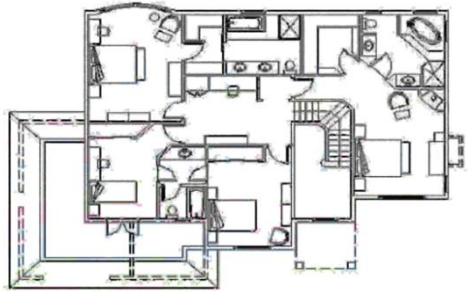
STEP.VII Installation

STEP.VIII After-sales Service



STEP.I Inquiry & Offer

INQUIRY



STEP.II Design

Design

OK

Customer Review & Confirmation

Analysis, Calculation, Evaluation & Check

Item	Quantity	Unit	Rate	Amount
1	100	m ²	1000	100000
2	50	m ³	2000	100000
3	20	m	5000	100000
4	10	kg	10000	100000
5	5	hr	20000	100000
6	2	lot	50000	100000
7	1	unit	100000	100000
8	0.5	unit	200000	100000
9	0.2	unit	500000	100000
10	0.1	unit	1000000	100000
11	0.05	unit	2000000	100000
12	0.02	unit	5000000	100000
13	0.01	unit	10000000	100000
14	0.005	unit	20000000	100000
15	0.002	unit	50000000	100000
16	0.001	unit	100000000	100000
17	0.0005	unit	200000000	100000
18	0.0002	unit	500000000	100000
19	0.0001	unit	1000000000	100000
20	0.00005	unit	2000000000	100000
21	0.00002	unit	5000000000	100000
22	0.00001	unit	10000000000	100000
23	0.000005	unit	20000000000	100000
24	0.000002	unit	50000000000	100000
25	0.000001	unit	100000000000	100000
26	0.0000005	unit	200000000000	100000
27	0.0000002	unit	500000000000	100000
28	0.0000001	unit	1000000000000	100000
29	0.00000005	unit	2000000000000	100000
30	0.00000002	unit	5000000000000	100000
31	0.00000001	unit	10000000000000	100000
32	0.000000005	unit	20000000000000	100000
33	0.000000002	unit	50000000000000	100000
34	0.000000001	unit	100000000000000	100000
35	0.0000000005	unit	200000000000000	100000
36	0.0000000002	unit	500000000000000	100000
37	0.0000000001	unit	1000000000000000	100000
38	0.00000000005	unit	2000000000000000	100000
39	0.00000000002	unit	5000000000000000	100000
40	0.00000000001	unit	10000000000000000	100000
41	0.000000000005	unit	20000000000000000	100000
42	0.000000000002	unit	50000000000000000	100000
43	0.000000000001	unit	100000000000000000	100000
44	0.0000000000005	unit	200000000000000000	100000
45	0.0000000000002	unit	500000000000000000	100000
46	0.0000000000001	unit	1000000000000000000	100000
47	0.00000000000005	unit	2000000000000000000	100000
48	0.00000000000002	unit	5000000000000000000	100000
49	0.00000000000001	unit	10000000000000000000	100000
50	0.000000000000005	unit	20000000000000000000	100000
51	0.000000000000002	unit	50000000000000000000	100000
52	0.000000000000001	unit	100000000000000000000	100000
53	0.0000000000000005	unit	200000000000000000000	100000
54	0.0000000000000002	unit	500000000000000000000	100000
55	0.0000000000000001	unit	1000000000000000000000	100000
56	0.00000000000000005	unit	2000000000000000000000	100000
57	0.00000000000000002	unit	5000000000000000000000	100000
58	0.00000000000000001	unit	10000000000000000000000	100000
59	0.000000000000000005	unit	20000000000000000000000	100000
60	0.000000000000000002	unit	50000000000000000000000	100000
61	0.000000000000000001	unit	100000000000000000000000	100000
62	0.0000000000000000005	unit	200000000000000000000000	100000
63	0.0000000000000000002	unit	500000000000000000000000	100000
64	0.0000000000000000001	unit	1000000000000000000000000	100000
65	0.00000000000000000005	unit	2000000000000000000000000	100000
66	0.00000000000000000002	unit	5000000000000000000000000	100000
67	0.00000000000000000001	unit	10000000000000000000000000	100000
68	0.000000000000000000005	unit	20000000000000000000000000	100000
69	0.000000000000000000002	unit	50000000000000000000000000	100000
70	0.000000000000000000001	unit	100000000000000000000000000	100000
71	0.0000000000000000000005	unit	200000000000000000000000000	100000
72	0.0000000000000000000002	unit	500000000000000000000000000	100000
73	0.0000000000000000000001	unit	1000000000000000000000000000	100000
74	0.00000000000000000000005	unit	2000000000000000000000000000	100000
75	0.00000000000000000000002	unit	5000000000000000000000000000	100000
76	0.00000000000000000000001	unit	10000000000000000000000000000	100000
77	0.000000000000000000000005	unit	20000000000000000000000000000	100000
78	0.000000000000000000000002	unit	50000000000000000000000000000	100000
79	0.000000000000000000000001	unit	100000000000000000000000000000	100000
80	0.0000000000000000000000005	unit	200000000000000000000000000000	100000
81	0.0000000000000000000000002	unit	500000000000000000000000000000	100000
82	0.0000000000000000000000001	unit	1000000000000000000000000000000	100000
83	0.00000000000000000000000005	unit	2000000000000000000000000000000	100000
84	0.00000000000000000000000002	unit	5000000000000000000000000000000	100000
85	0.00000000000000000000000001	unit	10000000000000000000000000000000	100000
86	0.000000000000000000000000005	unit	20000000000000000000000000000000	100000
87	0.000000000000000000000000002	unit	50000000000000000000000000000000	100000
88	0.000000000000000000000000001	unit	100000000000000000000000000000000	100000
89	0.0000000000000000000000000005	unit	200000000000000000000000000000000	100000
90	0.0000000000000000000000000002	unit	500000000000000000000000000000000	100000
91	0.0000000000000000000000000001	unit	1000000000000000000000000000000000	100000
92	0.00000000000000000000000000005	unit	2000000000000000000000000000000000	100000
93	0.00000000000000000000000000002	unit	5000000000000000000000000000000000	100000
94	0.00000000000000000000000000001	unit	10000000000000000000000000000000000	100000
95	0.000000000000000000000000000005	unit	20000000000000000000000000000000000	100000
96	0.000000000000000000000000000002	unit	50000000000000000000000000000000000	100000
97	0.000000000000000000000000000001	unit	100000000000000000000000000000000000	100000
98	0.0000000000000000000000000000005	unit	200000000000000000000000000000000000	100000
99	0.0000000000000000000000000000002	unit	500000000000000000000000000000000000	100000
100	0.0000000000000000000000000000001	unit	1000000000000000000000000000000000000	100000

STEP.III Placing Order

ITEM NO.	DESCRIPTION	QTY	UNIT	PRICE	AMOUNT
1	Concrete	100	m ³	1000	100000
2	Reinforcement	50	kg	2000	100000
3	Formwork	20	m ²	5000	100000
4	Labour	10	hr	10000	100000
5	Equipment	5	unit	20000	100000
6	Material	2	lot	50000	100000
7	Transport	1	unit	100000	100000
8	Permit	0.5	unit	200000	100000
9	Design	0.2	unit	500000	100000
10	Professional Fee	0.1	unit	1000000	100000
11	Contingency	0.05	unit	2000000	100000
12	Profit	0.02	unit	5000000	100000
13	Tax	0.01	unit	10000000	100000
14	Insurance	0.005	unit	20000000	100000
15	Other	0.002	unit	50000000	100000
16	Grand Total				100000000



Agreement Reached

STEP.IV Estimate

Quantity	Description	Unit	Rate	Amount
1	Concrete	m ³	1000	100000
2	Reinforcement	kg	2000	100000
3	Formwork	m ²	5000	100000
4	Labour	hr	10000	100000
5	Equipment	unit	20000	100000
6	Material	lot	50000	100000
7	Transport	unit	100000	100000
8	Permit	unit	200000	100000
9	Design	unit	500000	100000
10	Professional Fee	unit	1000000	100000
11	Contingency	unit	2000000	100000
12	Profit	unit	5000000	100000
13	Tax	unit	10000000	100000
14	Insurance	unit	20000000	100000
15	Other	unit	50000000	100000
16	Grand Total			100000000

STEP.V Production



STEP.VI Packing & Delivery



STEP.VII Installation



STEP.VIII After-sales Service

- PERIODICAL FOLLOW –UP VISIT TO OUR PROJECT
- FEEDBACK TO OUR TECHNICAL CENTER
- KEEPING RECORD FOR EACH PROJECT IN OUR INFORMATION CENTER
- MAKING PROGRESS WITH EACH STEP WE PROCEED



OVERSEAS PROJECTS



MALL IN MAURITIUS



RESORT AT MALDIVES





WAREHOUSE IN ROMANIA



MOTEL IN ANGOLA





VILLA IN MAURITIUS



**WAREHOUSE IN
ANGOLA**

RATES

- FOR STAFF QUARTER AND LOW BUDGET STEEL HOUSE

MATERIAL SPECIFICATION:- Wall panel(50mm cement wall), M.S Tube Structure-(Column,Beam,Truss, Purlin), Roof -(color coated profile sheet), Window –aluminum sliding 1200x1000,Door-laminate Door,0.75mm- PVC flooring and Paint-(Oilbond distemper).

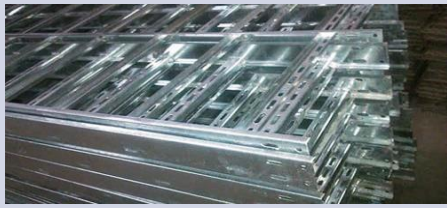




- FOR AFFORDABLE STEEL HOUSE



MATERIAL SPECIFICATION:- Cement wall panel 75-100mm thk & 50mm thk sandwich wall panel, M.S Tube Structure, Color Coated Profile Sheet in Roof, Laminated Door with frame , Aluminum / UPVC Window, Sanitary and Plumbing , Vitrified Tiles 800mm X 800mm and 600mm X 300mm in Toilet Wall, Outer and Inner Paint


- FOR STEEL VILLA

MATERIAL SPECIFICATION:- Everest Dry Wall, M.S Tube Structure, Color Coated Profile Sheet in Roof, Laminated Door with frame , Aluminum / UPVC Window, Sanitary and Plumbing ,Electrical (Points only) Vitrified Tiles 800mm X 800mm and 600mm X 300mm in Toilet Wall, Outer and Inner Paint .



NO	NAME	PICTURE	DISCRIPTION	UNIT
1	Hot-formed Aluminum coating steel		Q235,Z275galvanized ,G340	kg
2	Accessories of steel structure		SGC440,Z275	Sq.m
3	Steel tube		60mm*40mm*2mm	set
4	Fiber cement board (external wall)		100mm	Sq.m
5	Fiber cement board (interior wall)		100mm	Sq.m
6	Corrugated sandwich panel		50mm	Sq.m

NO	NAME	PICTURE	DISCRIPTION	UNIT
7	Electric system		Light, Sockets, Switch, Wires, etc	set
8	Water system		Water supply pipes, drainage pipe, triangle valve etc	set
9	Exterior safety door (laminated door)		900mm*2100	pcs
10	EPS sandwich door		800mm*2000mm	pcs

NO	NAME	PICTURE	DISCRIPTION	UNIT
11	Aluminum window		1000mm*1500mm single glass	pcs
			600mm*800mm	pcs