







Space Designers
Space Overseas Trading Company

 26, 201/301, "Space Designers",
Gaurav Residency, Lashkaribagh,
Bhoslewadi, Nagpur - 440 017

 +91 712 2641011

 + 919422860641, +91 9370199511

 spaceoverseastradingcompany@gmail.com
spacedesignerspvtltd@gmail.com



WOODEN HOUSE

Healthy Ecological Home Maker

I Turnkey Project I Hotel Room Furnitures I Pre Fabricated Steel Villa
I Russian Pine Wood Villa I All Interior Products

»» SPACE DESIGNER OVERVIEW



»»» OUR EQUIPMENTS



LATEST GERMAN HUNDEGGER K2I



GERMAN SCHMIDELER S6 PLUS



ITALIAN WOODEN DOORS AND WINDOWS PRODUCING LINE



LARGE FOUR SIDES MOULDER

SPACE DESIGNER HAS BROUGHT IN SCHMIDLER 56 PLUS AND HUNDEGGER K2I FROM GERMANY, WHICH ARE MOST ADVANCED PRODUCTION LINE AROUND THE WORLD. SPACE DESIGNER ALSO POSSESSES THIRD GRADE OVERALL CONTRACT QUALIFICATION AND EXCELLENT CONSTRUCTING AND INSTALLING TEAM. SPACE DESIGNER MAINLY FOCUSES ON LARGE POST & BEAM WOOD STRUCTURE, SOLID LOG HOUSE, TIMBER FRAME HOUSE, WOODEN TRAILER HOUSE, PREFABRICATED WOODEN HOUSE, ANTIQUE WOODEN HOUSE, WOOD STRUCTURE LANDSCAPE, WOODEN WINDOWS AND DOORS AND LAMINATED WOODEN BEAMS WHICH ARE WIDELY USED IN HIGH-END VILLA, PRIVATE HOUSE, KINGDERGARTEN AND SCHOOL, NURSING HOUSE, RECREATION CLUB, COMMERCIAL EXHIBITION, TOURISM AND HOLIDAY RESORT, TRAILER HOUSE CAMPSITE AND SO ON. KINGSPINE HAS GAINED POPULARITY IN SOUTHEAST ASIA, NORTH AMERICA, NORTHERN EUROPE AND OTHER COUNTRIES AND REGIONS.

»»» SPACE DESIGNER TRAILER HOUSE PROJECTS



»» MATERIALS SELECTION



MATERIALS IN STOCK

ALL OF OUR MATERIALS ARE IMPORTED, AND IN ORDER TO SUPPLY BEST HOUSE FOR OUR CLIENTS, WE ONLY CHOOSE TOP GRADE SPF, RUSSIAN PINE AND DOUGLAS FIR FOR OUR CLIENTS, THAT IS BASIC CONDITION BEFORE PRODUCTIONS. THEN WE CHOOSE QUALIFIED MATERIALS FROM THEM WITH STRICTLY STANDARD, THE USAGE RATE IS ABOUT 70%, ALTHOUGH THAT MAKES OUR PROFIT LOWER, BUT IT GIVES CLIENTS BEST PRODUCTS THAN EVER. MOISTURE CONTENT OF OUR MATERIAL IS 12%-15%.



SPF

SHORT FOR CANADIAN SPRUE, PINE AND FIR, WHITE COLOR WITH LESS PATTERNS. J GRADE (TOP GRADE) MATERIAL IS OUR ONLY OPTION.



RUSSIAN PINE

WOOD MATERIAL IS STRONGER, COLOR IS DARKER WITH MORE WOODEN PATTERNS.



DOUGLAS FIR

IT IS STRONGER AND USUALLY CHOSE FOR POST AND BEAM STRUCTURE BUILDINGS.

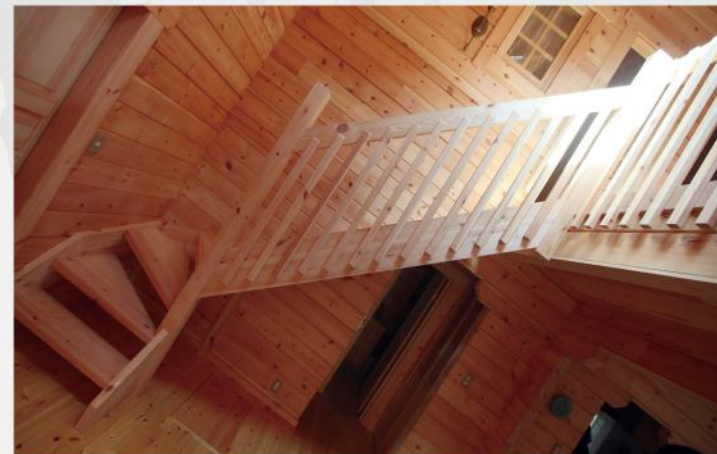
»» SPACE DESIGNER POST & BEAM STRUCTURE PROJECTS



»»» OUR PROJECTS



SPACE DESIGNER LOG HOUSE PROJECT



»»» PRODUCTION PROCESS



PROFESSIONAL PRODUCTION TEAM WITH MOST
ADVANCED MACHINERY, WE CAN PROVIDE BEST
HOUSE FOR ALL THE CLIENTS.



»» INSPECTION PROCESS



OUR INSPECTION TEAM MAKE SURE THAT ALL THE MATERIALS HAS BEEN PREPARED ACCORDING TO PACKING LIST, AND EVERY PIECE OF MATERIALS PRODUCED EXACTLY THE SAME WITH PRODUCTION DRAWINGS.

WE ALSO DO PRE-ASSEMBLING FOR ALL OF OUR PRODUCTS, THATS WHY ALL OF OUR HOUSES CAN BE ASSEMBLED SUCCESSFULLY DURING THE PAST 8 YEARS WITHOUT ANY MISTAKE.



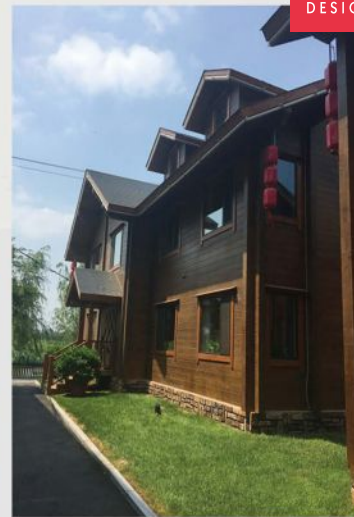
»» OUR PROJECTS



SPACE DESIGNER LOG HOUSE PROJECT



»»» OUR PROJECTS




**KINGSPINE LOG
HOUSE PROJECTS**



»»» INSPECTION PROCESS



»»» INSTALLATION PROCESS



MATERIAL ON SITE WOOD HOUSE



START WOOD HOUSE



INSTALLATION WALL WOOD HOUSE



FIRST FLOOR

»»» INSTALLATION PROCESS



WOODEN HOUSE RAFTER



ROOF SYSTEM



SHINGLE



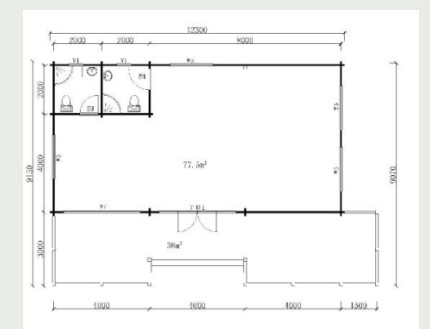
FINISH

»»» OUR PORJECTS

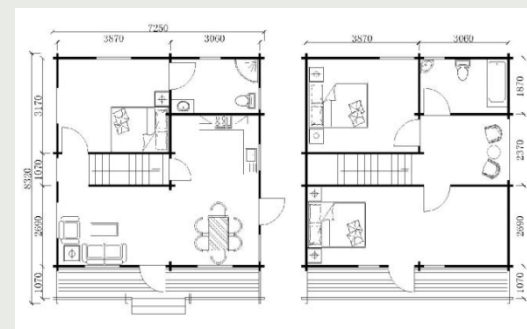


Gross floor area	137.0m ²
Ground floor	78.0m ²
1st floor	59.0m ²
Terrace	56.0m ²

»»» OUR PORJECTS



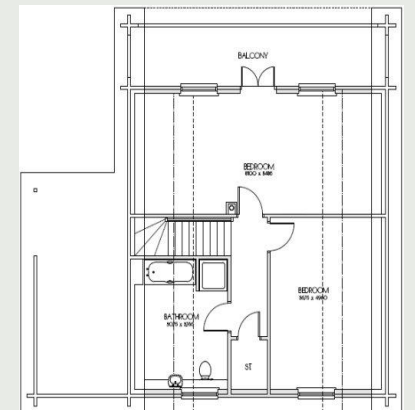
»»» OUR PROJECTS



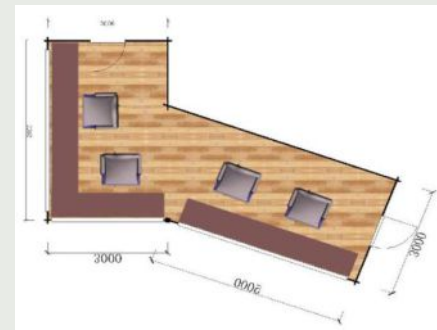
»»» OUR PROJECTS



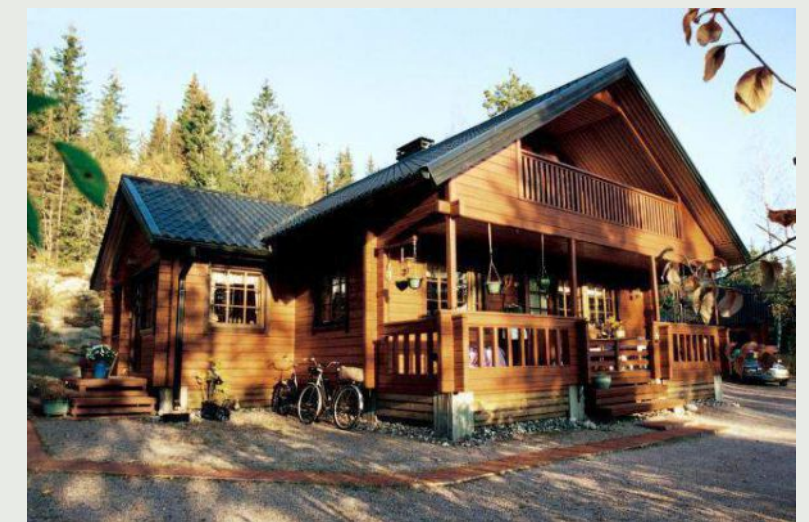
Gross floor area	154.8m ²
Ground floor	77.4m ²
1st floor	77.4m ²
Terrace	48.7m ²



»» OUR PROJECTS

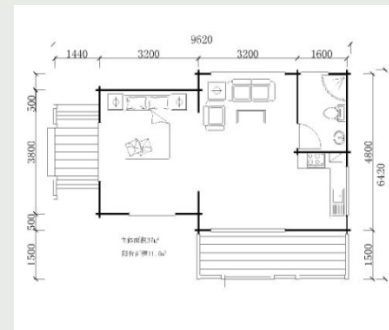


»» OUR PROJECTS



Gross floor area	124.0m ²
Ground floor	87.5m ²
1st floor	36.9m ²
Terrace	30.6m ²

»»» OUR PORJECTS



»»» OUR PORJECTS

